



---

# EVANS VANODINE HAND CARE GUIDE



1919  
2019

100 YEARS

## CONTENTS

3	Hand Care Introduction
4	Skin Care Range
5	Hand Care Plus Range
6	Bactericidal Hand Washes
7	Evolve Dispenser and Cartridges
8	Bulk Fill System
9	Industrial Bulk Fill System
10	Hand Care In The Workplace
11	Wall Brackets and Children's Handwashing

### EVANS VANODINE INTERNATIONAL PLC

Brierley Road, Walton Summit, Preston, PR5 8AH, England.

tel: +44 (0)1772 322200

web: [www.evansvanodine.co.uk](http://www.evansvanodine.co.uk)

email: [sales@evansvanodine.co.uk](mailto:sales@evansvanodine.co.uk)  
[export@evansvanodine.co.uk](mailto:export@evansvanodine.co.uk)



# HAND CARE INTRODUCTION

## THE FIRST IMPRESSION

The first and lasting impression any visitor, customer or employee receives on entering a washroom should be that it is clean, well maintained and with good hand washing and drying facilities.

## WHY IS CLEANLINESS IMPORTANT?

One of the major causes of cross contamination and the spread of infection is people not washing their hands when they should, not washing them in the correct way or not drying them thoroughly. This has a huge impact on the economy, when people become ill and subsequently have to take time off work or children are unable to attend school. It also puts tremendous pressure on Doctors' surgeries and the National Health Service, as vulnerable people such as children and the elderly are likely to become very ill and potentially could be hospitalised.

## CHOOSING THE RIGHT PRODUCT

Living in an environment where bacteria responsible for contagious diseases is becoming ever more resilient to modern antibiotics, hand washing is one of the most important procedures to protect yourself and others from infection. It is therefore paramount that the hand washing product and system you choose for your particular workplace are correct and suitable for your environment.

## OUR CERTIFICATIONS

Evans Vanodine have a vast amount of experience in manufacturing safe and cost effective products. Our hand care products are part of an extensive range of cleaning and hygiene chemicals, all manufactured to exacting standards. Evans Vanodine hand washing products are manufactured using cosmetic grade ingredients and fully comply with **The Cosmetic Products Regulation (1123/2009/EC)**. Evans Vanodine is an **ISO 9001** and **ISO 14001** registered company. These certifications provide customers with confidence that we have set defined standards in research, manufacture and service.

## LOW IMPACT ON THE ENVIRONMENT



Evans Vanodine have a unique system for identifying which products have a low impact on the environment, called the W.E.I.R. System. The products in this brochure which achieve this certification are marked with a green W.E.I.R. logo. For further details please visit [www.evansgreentick.com](http://www.evansgreentick.com)

## HELP AND ASSISTANCE

This guide is one in a series which has been produced to help users of Evans Vanodine products attain the best possible results. We realise there are various situations and circumstances that determine which products are the most suitable and we hope this guide is of benefit to you and helps you to choose the correct product and dispensing system. If you require any further assistance please contact your local Evans Distributor or our Sales Department.



## HAND WASHING FACTS

- Hand washing can help to prevent the spread of viruses
- Up to half of all men and women fail to wash their hands after they have been to the toilet
- The number of germs on your fingertips could double after using the toilet
- A third of people do not use soap when washing their hands
- Damp hands spread 1,000 times more germs than dry hands
- We each have millions of bacteria on our skin
- Clean hands help you to stay healthy and keep everybody around you healthy

## GENERAL ADVICE

- Always wash your hands after using the toilet.
- Always wash your hands before eating.
- Always wash your hands after working with animals.
- Always wash your hands if they are visibly dirty.
- Always wash your hands after handling raw meat.
- Always wash your hands after handling rubbish.
- Always wash your hands after contact with someone who is ill.
- Always dry your hands thoroughly.



# SKIN CARE RANGE

## ABOUT THE RANGE

Our skin care range has been developed to satisfy the extremely high standards essential in today's modern washroom. All products are formulated using fine grade ingredients and manufactured under a procedure which complies with **The Cosmetic Products Regulation (123/2009/EC)**. Our hand wash products are mild and gentle, yet clean thoroughly, providing a rich creamy lather with added moisturiser to help keep skin soft, supple and smooth.



### LUXURY SILK

Hand, hair and body wash



- Luxurious, enriched, pearlised liquid.
- Contains extra moisturiser.
- The fine delicate perfume ensures it is perfect for prestigious washrooms.
- Low impact on the environment.

### PINK PEARL

Hand, hair and body wash



- Attractive, creamy, pearlised liquid.
- Contains a subtle floral and jasmine perfume.
- Produces a popular, classical fragrance, perfect in all types of washroom.

### OCEAN BLUE

Hand, hair and body wash



- Invigorating, clear blue liquid.
- Contains a contemporary sea mineral perfume.
- Creates a clean, revitalising fragrance.
- Ideal for all premium washrooms.
- Also available in a cartridge pack (see page 7).

### ORCHARD FRESH

Hand, hair and body wash



- Refreshing, clear liquid.
- Contains a blend of grapefruit, mandarin and apple perfumes.
- Creates a modern, zesty aroma.

### CITRUS FOAM

Luxury Hand and Body Wash



- Luxurious hand and body wash which generates an instant, soft, silky foam.
- Contains an added moisturiser to help protect the skin.
- Fresh, citrus fragrance.

### HAND LOTION

Moisturiser with shea butter



- High grade lotion enriched with shea butter.
- A fragrant blend of bergamot, lemon, jasmine and rose leaf perfumes.
- Absorbs quickly into the skin, making it a delight to use.

# HAND CARE PLUS RANGE

## ABOUT THE RANGE

Our hand care plus range has been developed to satisfy the extremely high standards essential in today's working environment.

All Evans Vanodine soaps and lotions are formulated using fine grade ingredients and are manufactured under a procedure which complies with **The Cosmetic Products Regulation (123/2009/EC)**.



## HANDSAN™

70% Alcohol based hand rub



- Highly effective hand sanitiser with added moisturiser.
- Quickly evaporates from hands without leaving a residue or odour.
- Kills bacteria. Passes **EN 1500**, **EN 13727** and also **EN 1276** with a 30 second contact time.
- Ideal for use in medical care establishments and food preparation areas.
- Also available in a cartridge pack (see page 7).

## TRIGON®

Unperfumed hand wash



- High active liquid hand wash.
- Suitable for frequent hand washing.
- Unperfumed, suitable where food is handled, prepared or processed.
- Contains emollients for extra skin protection.
- Also available in a cartridge pack (see page 7).

## CAREHANDS

Barrier and moisturising cream



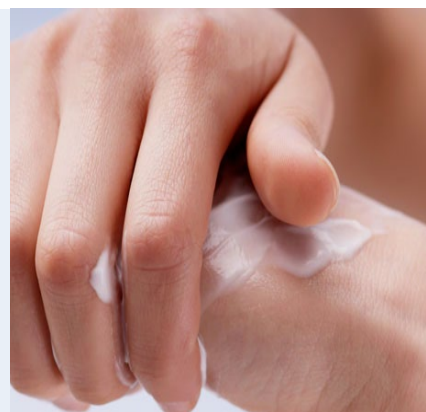
- Multi purpose, non greasy hand cream.
- Provides skin protection in wet and dry working conditions.
- Suitable for use under rubber gloves as a secondary line of protection.
- Unperfumed, ideal for use in kitchens and food preparation areas.
- Highly recommended for use in all types of industry.

## SKIN PROTECTION AT WORK

People in industry who work mainly with their hands are often at risk of dry, itchy skin conditions, such as dermatitis, and may require a barrier cream which will protect against water and general soiling.

CAREHANDS barrier and moisturising cream works by forming a protective layer over the skin that locks moisture in and helps keep irritants out.

CAREHANDS is unperfumed and gives protection in wet and dry working conditions. It can be used anywhere from kitchens and food preparation areas to all types of general industry including garages, engineering workshops, printers, warehouses, transport companies, gardening contractors and farms. It is highly recommended for use under rubber gloves as a secondary line of protection.



# BACTERICIDAL HAND WASHES

## TRIGON® PLUS Bactericidal Hand Wash



5l 1l 500ml

- Proven to kill 99.999% of bacteria; helps reduce the risk of cross-contamination.
- Ultra high levels of moisturiser and added allantoin leave the skin soft and smooth; ideal for where frequent hand washing is necessary.
- Provides a silky cleansing action.
- For use in an Evans Evolve Liquid Soap or Cartridge Dispenser.

## TRIGON® FOAM PLUS Bactericidal Foaming Hand Wash



1l

- Proven to kill 99.999% of bacteria; helps reduce the risk of cross-contamination.
- Ultra high levels of moisturiser and added allantoin leave the skin soft and smooth; ideal for where frequent hand washing is necessary.
- For use in an Evans Evolve Cartridge Foam Dispenser.



TRIGON® PLUS and TRIGON® FOAM PLUS are highly effective, unperfumed, bactericidal hand washes that simultaneously generate a rich creamy lather, to remove visible soiling, and kill a wide range of bacteria. These products are also highly cost effective (eg. TRIGON® FOAM PLUS produces over 550 washes per 1 litre cartridge when used at the recommended dose to pass EN1499).

Tested by an independent laboratory on volunteers' hands using test method EN 1499.  
Tested by our UKAS accredited laboratory using test method EN 13727 and EN 1276.



TRIGON® PLUS and TRIGON® FOAM PLUS are the most recent additions to the Evans Vanodine Skin Care range, developed by our highly qualified and experienced product development chemists and microbiologists.

Evans Vanodine have over 30 years experience in developing products containing chlorhexidine digluconate. This highly effective bactericide is widely used in oral hygiene products and for skin applications such as surgical scrubs and pre-operative skin antisepsis.

The unique combination of surfactants, emollients and chlorhexidine digluconate creates highly effective bactericidal hand washes with excellent skin conditioning properties.

TRIGON® PLUS and TRIGON® FOAM PLUS are recommended for use in catering, food preparation and processing areas, healthcare, nursing homes and wherever hand hygiene is of the utmost importance. They are also suitable for use in veterinary practices and on the farm.

The EVANS EVOLVE dispenser is quick and easy to re-load with the TRIGON® FOAM PLUS cartridge and will deliver a pleasing to use, gentle foam. This instant foam spreads easily across the hands and rinses away to leave the hands clean and disinfected.

# EVOLVE DISPENSER AND CARTRIDGES



## EVANS EVOLVE CARTRIDGE DISPENSER

A modern designed soap dispenser, to complement any decor. The smooth ergonomic design minimises dirt traps, makes it easy to keep clean and most importantly is strong and very durable.

There is a choice of easy, accurate and controllable dispensing systems. These include a refillable reservoir and a pre filled disposable cartridge with a unique connecting design which only allows an Evans cartridge to be used in the Evolve dispenser.

The cartridges are sealed to prevent contamination and designed to make re-loading your dispenser quick and easy. Dispensers and cartridges are available for liquid, foam mousse or alcohol hand rub.

Liquid soap dispenser    Order code: D090AEV (If using Citrand™ please request a gel pump fitting)  
Foam soap dispenser    Order code: D091AEV

## HOW TO REPLACE CARTRIDGE

- 1 Open dispenser and dispose of the old cartridge.
- 2 Remove red transport cap.
- 3 Insert new cartridge with the label facing towards the back.
- 4 Push down on the cartridge to click into place and pierce the seal.
- 5 Close dispenser.



### TRIGON®

Unperfumed hand wash



- High active liquid hand wash.
- Suitable for frequent washing.
- Unperfumed, suitable where food is handled, prepared or processed.
- Contains emollients for extra skin protection.

### TRIGON® PLUS

Bactericidal Hand Wash



- High active, bactericidal hand wash.
- Passes **EN 1499** and **EN 13727**.
- Passes **EN 1276**; kills 99.999% of bacteria.
- Helps to reduce cross contamination.
- Contains emollients for extra skin protection.

### TRIGON® FOAM PLUS

Bactericidal hand wash



- Foaming, bactericidal hand wash.
- Passes **EN 1499** and **EN 13727**.
- Passes **EN 1276**; kills 99.999% of bacteria.
- Helps to reduce cross contamination.
- Contains emollients for extra skin protection.

### HANDSAN™

70% Alcohol based hand rub



- Hand sanitiser with added moisturiser.
- Quickly evaporates from hands without leaving a residue or odour.
- Passes **EN 1500**, **EN 13727** and **EN 1276** with a 30 second contact time. Kills bacteria.
- Ideal for use in medical and food preparation areas.

### OCEAN BLUE

Hand, hair and body wash



- Invigorating, clear blue liquid.
- Contains a contemporary sea mineral perfume.
- Creates a clean revitalising fragrance.
- Ideal for all premium washrooms.

### CITRUS FOAM

Hand and body wash



- Luxurious hand and body wash generating an instant soft, silky foam.
- Contains an attractive and refreshing fruity perfume.
- Contains an added moisturiser to help protect the skin.

### CITRAND™

Hand gel with pumice



- Soft, mobile, citrus hand cleaning gel.
- Removes medium to heavy oil, grease, grime and every day soiling.
- Added pumice to remove difficult soil.
- Neutral pH. Free from harmful solvents.
- Easily rinses off with water.

### CAREHANDS

Barrier and moisturising cream



- Unperfumed, multi purpose, non greasy hand cream.
- Provides skin protection in wet and dry working conditions.
- Suitable for use under rubber gloves.
- Highly recommended for use in all types of industry.

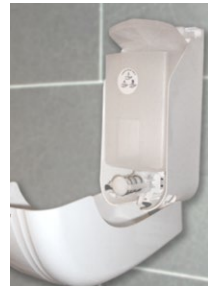
# BULK FILL SYSTEM



## EVANS REFILLABLE DISPENSERS

A 900ml capacity bulk fill dispenser with a 2ml liquid soap pump or 0.6ml foam pump. It can be refilled with any of our 5 litre liquid or foam soaps and hand sanitiser gel.

Liquid soap dispenser	- Order code: D011AEV (request a gel pump)
Foam soap dispenser	- Order code: D089AEV
Cartridge soap dispenser	- Order code: D090AEV (request a gel pump)
Industrial MP dispenser	- Order code: D080AEV



## HOW TO REFILL

- 1 Open dispenser.
- 2 Remove the lid on the inner reservoir and fill with the product of your choice.
- 3 If filling with gel or cream, ensure the following plate is placed on top of the product.
- 4 Replace the lid of the reservoir.
- 5 Close dispenser.

It may be necessary to rinse the pump fittings to remove any build up and keep the dispenser in good working condition.



## BULK FILL SKIN CARE COLLECTION

Perfumed hand, hair and body wash



- Range of high quality hand, hair and body washes.
- Neutral pH and added moisturisers; kind to skin and helps prevent dryness.

*Pink Pearl* - Pearlsed liquid with rose, gardenia and cedar floral fragrance  
*Ocean Blue* - Clear liquid with contemporary sea mineral fragrance  
*Luxury Silk* - Luxury pearlsed liquid with blend of rose and ylang ylang  
*Orchard Fresh* - Clear liquid with grapefruit, mandarin and apple fragrance

## CITRUS FOAM

Hand and body wash



- Luxurious hand and body wash; generates an instant, silky foam.
- Fresh, citrus fragrance.
- Contains an added moisturiser to help protect the skin.

## TRIGON®

Unperfumed hand wash



- High quality, liquid hand wash.
- Unperfumed, suitable where food is handled, prepared or processed.
- Contains emollients for extra skin protection.
- Suitable for frequent hand washing.

## CITRAND™

Heavy-duty hand gel with pumice



- Soft, mobile hang cleaning gel.
- Removes medium to heavy oil, grease, grime and every day soiling.
- Formulated with pumice to agitate and remove difficult soiling.
- Neutral pH. Free from harmful solvents.
- Contains glycerine for added skin protection.

## CAREHANDS

Barrier and moisturising cream



- Multi purpose, non greasy hand cream.
- Provides skin protection in wet and dry working conditions.
- Suitable for use under rubber gloves, as a secondary line of protection.
- Unperfumed, ideal for use in kitchens and food preparation areas.
- For use in all types of industry.

## HANDSAN™

70% Alcohol based hand rub



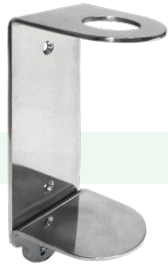
- Highly effective hand sanitiser with added moisturiser.
- Quickly evaporates from hands without leaving a residue or odour.
- Kills bacteria. Passes **EN 1500**, **EN 13727** and also **EN 1276** with a 30 second contact time.
- Ideal for food and medical environments.



Product ID labels for your dispenser window are available free of charge.

# WALL BRACKETS

## SINGLE BRACKET



- Custom made, stainless steel single wall bracket with locking system.
- Designed and produced exclusively to fit our 500ml round bottles.
- Product code: D021AEV

## TWIN BRACKET



- Custom made, stainless steel double wall bracket with locking system.
- Designed and produced exclusively to fit our 500ml round bottles.
- Product code: D022AEV

## PLASTIC COATED BRACKET



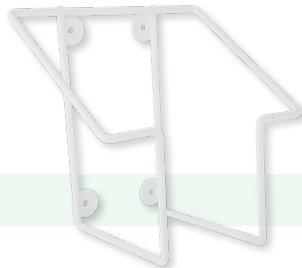
- Custom made, white plastic coated, wire wall bracket.
- Designed and produced exclusively to fit our 500ml round bottles.
- Product code: D088AEV

## PELICAN PUMP



- Pump dispenser to fit onto a 5 litre bottle.
- Each pump delivers 30ml of product.
- Helps to avoid contamination of product.
- Product code: C082AEV

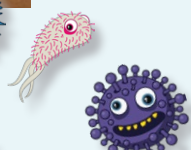
## 5 LITRE BASKET



- Designed and produced specifically to fit a 5 litre bottle.
- Can be affixed to a wall for greater stability.
- To be used in conjunction with a pelican pump to provide an economical dispensing system.
- Product code: D014AEV



# CHILDREN'S HANDWASHING



Evans Vanodine introduced unique characters Edward and Emily, along with 6 handwashing related germs, to help teach children the importance of washing their hands.

Stickers are available for personalising the Evans Evolve soap dispenser and 'Well Done' stickers to give out to children once they have taken part in a hand washing lesson.

Edward and Emily have a variety of support literature, including a lesson plan, posters, quizzes, games and colouring sheets, which children and teachers can download via the website.

Edward and Emily also have facebook and twitter pages where finished pictures can be uploaded and enjoyed by everyone.



All stickers are available upon request.

[www.childrenshandwashing.com](http://www.childrenshandwashing.com)

# HAND CARE IN THE WORKPLACE

## HAND CARE DISPENSING SYSTEMS

Maintaining good hand hygiene in the workplace is very important if skin problems are to be avoided. Creating a good hand care routine can reduce the spreading of germs and viruses, as well as the risk of skin problems. This will all help to reduce staff absenteeism and also safeguard your business's reputation.

Deciding to have a dedicated dispensing system in place guarantees you get the right product in the right area.

Evans Vanodine has a range of bactericidal hand washes which pass **EN 1276**, **EN 1499** and **EN13727**. Microbiological profiles are available to download via our website.



Manufacturing,  
warehousing  
and logistics

Professional  
kitchens,  
cafeterias and  
food premises

Offices and  
public areas

Medical and  
clinical areas



### PROTECT AND RESTORE



Pre/post-work cream to protect the skin in both wet and dry working conditions. Can be used underneath gloves to keep the skin moisturised. Can also reduce dirt from becoming ingrained making the hands easier to clean.

### CLEANSE



Perfumed or unperfumed hand washes to remove visible soiling and reduce the spread of germs.

### CLEANSE HEAVY DUTY



Cleansing hand gel containing pumice to remove oil, grease, grime and ingrained soiling. Neutral pH. Contains glycerine to help protect the skin.

### SANITISE



Quick acting alcohol based hand rub. For use throughout the day to prevent the spread of germs. Evaporates from hands without leaving a residue or odour.

## GETTING THE BEST FROM YOUR SYSTEM

Communication and education on skincare is essential in any working environment. Employees' skin problems go largely unreported and this can lead to the spread of germs and infection, which can affect your business through absenteeism. By introducing a simple skincare routine, tailored to your workplace, you can:

- ◆ Raise skin care standards
- ◆ Improve skin health
- ◆ Reduce the spread of infection
- ◆ Increase efficiency
- ◆ Reduce costs

We recommend an easy to use system which can be easily implemented within your workplace.

Evans Vanodine provide products that comply with Cosmetic Regulations and manufacture to ISO 9001 and ISO 14001 management standards.

<div></div> <div>PRODUCT</div>			LOCATION / SOILING												
			Outdoor	Light soiling	General dirt and soiling	Heavy industry	Office / Commercial / Leisure	General hygiene	Food and catering	Medical and clinical areas	Industrial / Garages	Acrylic based paints	Tar	Resins and sealants	Catering oils and fats
	Carehands	- Reconditioning cream	◆	◆	◆	◆	◆	◆	◆	◆	◆	◆	◆	◆	
	Hand Lotion	- With shea butter					◆	◆							
	Ocean Blue	- Hand wash		◆	◆	◆	◆	◆			◆	◆	◆	◆	
	Citrus Foam	- Hand wash		◆	◆	◆	◆	◆			◆	◆	◆	◆	
	Trigon	- Hand wash		◆	◆	◆		◆	◆					◆	
	Trigon Plus	- Hand wash		◆	◆	◆			◆	◆				◆	
	Trigon Foam Plus	- Hand wash		◆	◆	◆			◆	◆				◆	
	Citrand	- Hand scrub			◆	◆					◆	◆	◆	◆	
	Handsan	- Hand sanitiser	◆	◆	◆		◆	◆	◆	◆				◆	

# HAND CARE SYSTEM

## HAND HYGIENE BOARDS



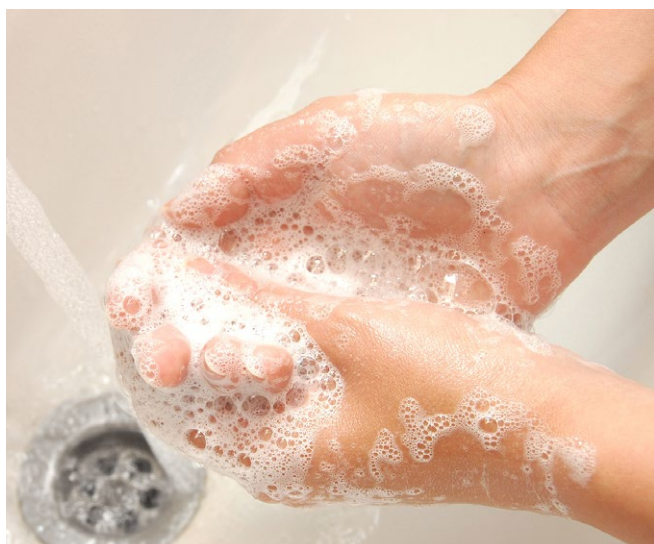
**NON-CRITICAL AREAS**



**CRITICAL AREAS**



**GENERAL INDUSTRY**



## USING YOUR BOARDS

Hand hygiene boards can be placed where you need them most, giving guidance on best practice for hand hygiene and a visual reminder to clean your hands.

### NON-CRITICAL AREA BOARD

These can be placed anywhere, but we recommend them for use in: Reception areas | Washrooms | Schools | Leisure centres | Waiting rooms | Children's play centres.

### CRITICAL AREA BOARD

These can be placed in areas where there is a risk of cross contamination or where a hand sanitiser is required, i.e. where water is not freely available to wash hands. We recommend them for use in: Care homes | Hospitals | Catering | Dairy parlours | Reception areas | Doctors' surgeries | School medical rooms | Children's play centres.

### GENERAL INDUSTRY BOARD

These can be placed in any area for general use or where a handwashing system needs to be followed. We recommend them for use in: Factories and warehouses | Food process plants | Catering | Healthcare | Schools.

## EVOLVE

Cartridge dispenser



Product ID labels for your dispenser window are available free of charge.

## CARTRIDGE SKIN CARE COLLECTION



Handcare systems can be used wherever you need to implement a handwashing routine.

Evans Vanodine wallboards and cartridge dispensers are easy to install and due to their smooth lines, are easy to clean and maintain.

The cartridges can be fitted in less than 60 seconds, saving you precious time for other jobs. Both the empty cartridges and the red transit cap can be recycled\*

Whichever handcare system you choose to use, you can be assured of a strong and durable dispensing system.

\* Please check your local recycling



Copyright © 2020 Evans Vanodine.  
All Rights Reserved.

# EVANS VANODINE

**Evans Vanodine International plc**  
Brierley Road, Walton Summit, Preston, PR5 8AH, England.  
tel: +44 (0)1772 322200  
web: [www.evansvanodine.co.uk](http://www.evansvanodine.co.uk)  
email: [sales@evansvanodine.co.uk](mailto:sales@evansvanodine.co.uk)  
[export@evansvanodine.co.uk](mailto:export@evansvanodine.co.uk)

