

e:dose

SUPER CONCENTRATE GUIDE



Evans
Vanodine
EST. 1919



E:DOSE

SUPER CONCENTRATES

EC2

DEGREASER

HEAVY-DUTY CLEANER DEGREASER



- Multi-purpose, heavy-duty cleaner degreaser.
- Unperfumed; ideal in the food industry.
- Easily removes ingrained soil and heavy grease from a variety of hard washable surfaces.
- Ideal for use on cooker hoods, ovens, floors and walls.
- Low dosage, very economical in use.

EC4

SANITISER

UNPERFUMED CLEANER SANITISER



- Multi-surface, cleaner and disinfectant.
- For use in catering, food processing and preparation areas, health care, nursing homes and schools.
- Passes EN 16777 and EN 14476; effective against enveloped viruses.
- Passes EN 1276, EN 16615 and EN 1650. Kills bacteria and yeast.
- Low dosage, very economical in use.

PASSES (see microbiological profile for further info)	DILUTION	CONTACT TIME
EN 16777 - enveloped viruses (e.g. Coronaviruses)	1:60	1 min
EN 1276 - bactericidal		30 sec

Use disinfectants safely. Always read the label and product information before use.

EC5

PERFUMED SANITISER

CLEANER SANITISER



- Multi-surface, perfumed cleaner and disinfectant.
- For use in schools, hospitals, health care establishments, nursing homes, offices and hospitality as well as in the leisure industry.
- Helps to prevent the spread of infection.
- Passes EN 14476; effective against enveloped viruses.
- Passes EN 1276 with a 30 second contact time.
- Also passes EN 16777 at 1:30 and EN 16615 and EN 1650. Kills bacteria and yeast.
- Low dosage, very economical in use.

PASSES (see microbiological profile for further info)	DILUTION	CONTACT TIME
EN 14476 - enveloped viruses (e.g. Coronaviruses)	1:60	1 min
EN 1276 - bactericidal		30 sec
EN 13697 - bactericidal		5 min

Use disinfectants safely. Always read the label and product information before use.

EC6

ALL-PURPOSE

HARD SURFACE CLEANER



- Multi-surface, hard surface cleaner.
- Contains a clean, refreshing fragrance.
- Neutral formulation for removing light and general soiling from a variety of surfaces.
- For daily and general cleaning of glass, mirrors, paintwork, laminate, veneer, plastic and all hard floor surfaces.
- Ideal for the professional contract office cleaning market.

EC7

HEAVY-DUTY

HEAVY-DUTY HARD SURFACE CLEANER



- Multi-surface, heavy-duty cleaner.
- Alkaline pH formulation.
- Removes general and heavy soiling.
- Contains a clean, fresh fragrance.
- For cleaning dirty, busy traffic areas and surrounds, ideal for use on vinyl, rubber and concrete floors.
- Suitable for use in scrubber dryer machines; ideal for busy shopping centres and factories.
- Also suitable for cleaning unpolished floors in conjunction with a high-speed floor machine or through a scrubber dryer.

EC8

AIR FRESHENER

AIR FRESHENER AND FABRIC DEODORISER



- Contains a patented ingredient which counteracts malodours and enables the perfume to deliver a long-lasting fragrance.
- Ideal on fabrics which cannot be cleaned in a washing machine, such as curtains, soft furnishings and carpets.
- An appealing fragrance with notes of jasmine, rose and lime.
- Non-flammable formulation.
- Concentrated: low dosage, very economical in use.

E:DOSE SUPER CONCENTRATES

EC9+

WASHROOM DISINFECTANT AND DESCALER



- Highly fragranced, multi-surface acidic cleaner.
- Ideal for disinfecting and descaling washbasins, baths, showers, toilets and tiles.
- Passes EN 14476 and EN 16777; effective against enveloped viruses.
- Passes EN 1276. Kills a range of bacteria including Legionella.
- For use with foaming trigger spray or flip top closure toilet bottle.

PASSES (see microbiological profile for further info)	DILUTION	CONTACT TIME
EN 16777 - enveloped viruses (e.g. Coronaviruses)	1:60	1 min
EN 1276 - bactericidal (inc: Legionella)		

Use disinfectants safely. Always read the label and product information before use.

EC10

TOILET PERFUMED TOILET CLEANER AND DESCALER



- Powerful, acidic toilet and urinal cleaner descaler.
- Uses thicken-on-dilution technology. Clings to vertical surfaces, allowing a longer contact time.
- Quick and effective action; removes heavy limescale, soil and body fat.
- Formulation based on methane sulphonic acid; readily biodegradable and free of phosphorous and nitrogen, minimising the production of phosphates when entering waterways.
- Suitable for use on porcelain, stainless steel, chrome, ceramic and quarry tiles.
- Concentrated: low dosage, very economical in use.

DOSING SYSTEMS

Eco Shot - Manual dosing



Compact, push-pump chemical dosing unit, delivers an accurate dose of concentrate product into bottles and buckets. The unit is easy to use, reducing waiting time for operatives. Dosage can be adjusted from 5 - 30ml, in increments of 5ml, delivering optimum cost in use.

No plumbing is required to install the Eco Shot, giving you the freedom to install it wherever you need it.

Lockable cabinets, for safe, secure and spill free product storage, as well as easy identification of each product in use.

- Safe, accurate dosing
- Cost control in your hands
- No chemical wastage
- Product ID labels available

Trigger Fill: C087AEV

Bucket Fill: C088AEV

ProMax - Dosing system



The ProMax dosing system is a highly accurate, multi-product dilution system, dispensing up to 4 products, into bottles and/or buckets, at the turn of a dial.

The ProMax dosing system delivers your chosen product when you need it, without the need to manually dose chemicals by hand.

- Multi-product, compact dosing
- No chemical wastage
- Safe, simple operation
- Product ID labels available

1 product trigger Fill D068AEV
4 product trigger Fill D069AEV

1 product bucket Fill D101AEV
4 product bucket Fill D102AEV

Fusion Pro - Dispensing system



Highly accurate, single and multi-product dilution system, dispensing up to 4 products, into bottles and/or buckets.

Ideal where space is restricted. The unit is easy to install. The pilot activated water valve simplifies service, with fewer components making service and maintenance easier and faster. Lockable cabinets, for safe, secure and spill free product storage, as well as easy identification of each product in use.

The Fusion Pro dispensing system delivers your chosen product without the need to manually dose eliminating inaccurate dosing or guesswork.

- Multi-product, compact dosing
- Safe, simple operation
- No chemical wastage
- Product ID labels available

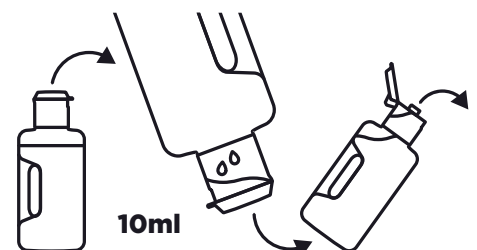
1 Product Trigger/Bucket Fill: D164AEV

4 Product Trigger/Bucket Fill: D165AEV

Dosing Caps - Manual dosing



Fill a trigger bottle or bucket with water. With the dosing bottle cap closed, tip the container upside down, wait a few seconds for the 10ml reservoir to fill and tip back to an upright position. Open the flip top and pour the dose into the bottle or bucket.



SUNDRIES

Screen Printed Bottles - For ready-to-use solutions

Screen printed bottles spray bottles and toilet bottles are available to purchase for e:dose products in packs of 6

- Easy product identification
- Reusable, better for the environment



EC2 D006AEV Trigger bottle
EC5 D179AEV Trigger bottle
EC7 D009AEV Trigger bottle
EC9+ D012AEV Trigger bottle
EC10 D026AEV 1L Toilet bottle

EC4 D007AEV Trigger bottle
EC6 D008AEV Trigger bottle
EC8 D010AEV Trigger bottle
EC9+ D035AEV 1L Toilet bottle

Product ID labels - Available free of charge



Product identification stickers for use on dispensers and dosing units. Help to identify which products are being used.

- Identification
- No guesswork



Lockable Cabinet - Secure storage



Both the Eco Shot and ProMax dosing systems can be complemented by a 5 litre lockable cabinet, for safe, secure and spill free product storage. Multiple cabinets can be set-up side by side, with feeding tubes housed internally, for a clean and tidy system. The clear front window allows for easy identification of each product in use.

- Safe, secure storage
- Easy product identification
- Orderly, clutter-free, set-up

Lockable Cabinet D093AEV

Wall Brackets



Cage brackets are available to hold your product to keep it secure.

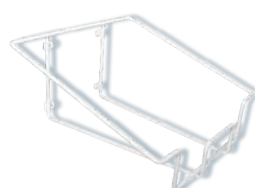
- Allows you to easily identify the product
- Keeps cleaning cupboards neat and tidy
- Keeps products off floors.



5 litre wall bracket: D014AEV

1 litre wall bracket: D023AEV

Shelf Bracket and Tap



The horizontal cage will hold 2 x 5 L bottles in position with an aeroflow tap attached to safely and easily refill the 1 litre dosing bottle.

- Ideal for positioning on a shelf
- Aeroflow tap is easy to use with only 2 positions ON and OFF
- Keeps the 5 L bottles safe and secure
- Keeps cleaning cupboards neat and tidy
- Keeps products off floors.

2 x 5 litre cage bracket: D078AEV

Aeroflow tap: GP0201

PACKAGING AND SUSTAINABILITY

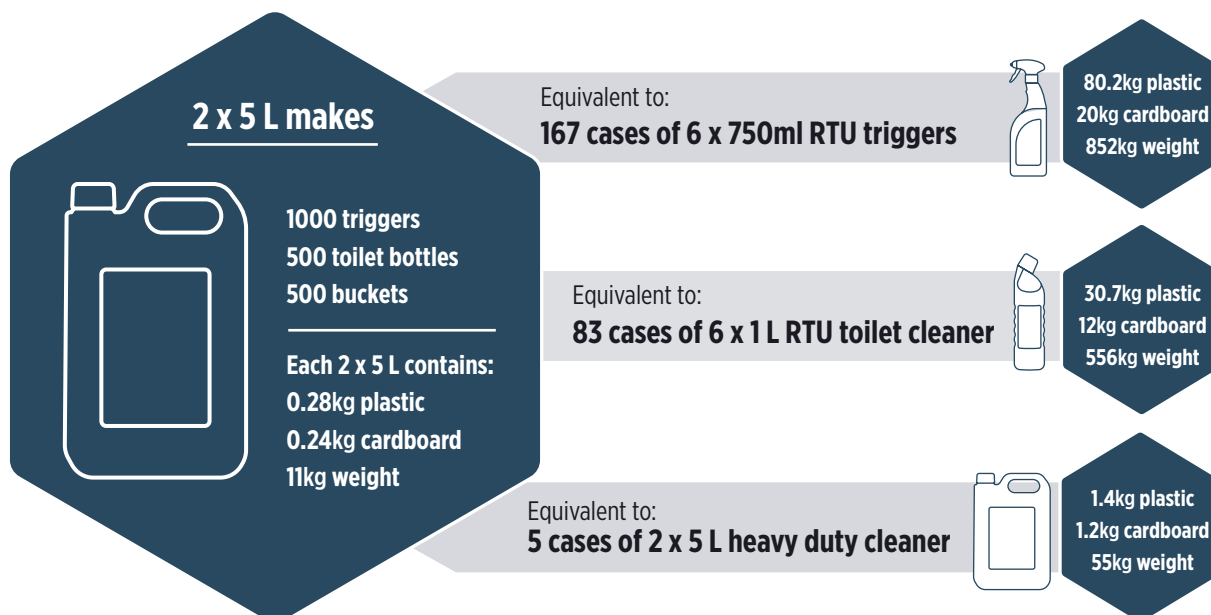
REDUCED PACKAGING

REDUCED WASTE

REDUCED TRANSPORT

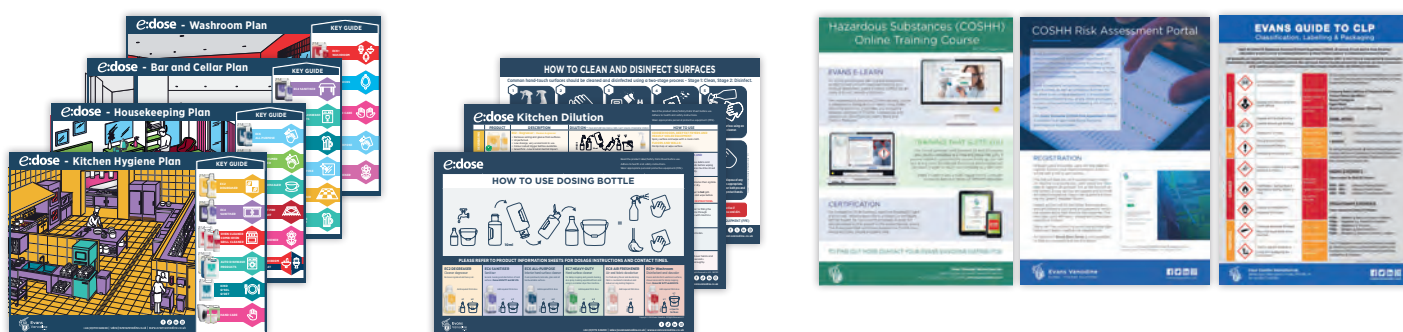
E:dose Concentrates

Equivalent Volumes



SUPPORT

Literature

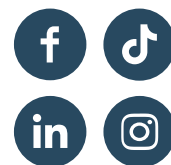


Evans Vanodine produces a range of brochures, leaflets and wallcharts. All literature and product information is available to view and download from our website. Safety Data Sheets and Microbiological Profiles, which substantiate disinfectant claims, are also available on-line.

Evans E-Learn is FREE for all users of Evans Vanodine products, when accessed through an approved supplier which consists of COSHH training and a COSHH Risk Assessment Portal.

To download literature please visit our website: www.evansvanodine.co.uk/leaflets.

Directions for use can be found on both the product label and the product specification sheet, which is available to view or download via our website www.evansvanodine.co.uk.



EVANS VANODINE INTERNATIONAL PLC
Brierley Road, Walton Summit, Preston, PR5 8AH. England
tel: +44 (0) 1772 322200
web: www.evansvanodine.co.uk
email: sales@evansvanodine.co.uk
export@evansvanodine.co.uk

