

KITCHEN HYGIENE GUIDE



**Evans
Vanodine**
EST. 1919



DEGREASING HEAVY SOILING AND FLOORS



DISINFECTION SURFACES AND EQUIPMENT



Lift® Heavy-duty cleaner degreaser



5 L

Lift® RTU Heavy-duty cleaner degreaser



750 ml

Est-eem® Unperfumed sanitiser disinfectant



5 L

Est-eem® RTU Unperfumed sanitiser disinfectant



750 ml

- Powerful, concentrated, multi-purpose cleaner and heavy-duty degreaser.
- Easily removes fat, grease, oil and ingrained soiling.
- Unperfumed and non-tainting.
- Ideal wherever food is handled, prepared or served.
- For use on all washable hard surfaces, deep fat fryers, ovens and canopies.

- Ready-to-use, heavy-duty degreaser.
- Removes heavy soiling and grease.
- Unperfumed and non-tainting.
- Convenient pre-diluted formulation.
- Ideal wherever food is handled, prepared or served.
- For use on all washable hard surfaces and equipment.

- Multi-purpose, unperfumed cleaner sanitiser disinfectant.
- Ideal for use in food and catering areas.
- Suitable for use on all food contact surfaces.
- Removes soil and kills bacteria in one operation.
- Passes EN 1276 with a 30 second contact time.
- Also passes EN 16777, EN 14476, EN 16615 and EN 1650.

- Ready-to-use, unperfumed cleaner sanitiser disinfectant.
- Ideal in food and catering areas.
- Use on all food contact surfaces.
- Ideal wherever food is handled, prepared or served.
- Passes EN 1276 with a 30 second contact time.
- Also passes EN 16777, EN 14476, EN 16615 and EN 1650.

DISINFECTION SURFACES AND EQUIPMENT



Ensure™ Alcohol sanitiser



750 ml

5 L

Trident Sanitising powder



500gm

5 kg

Chlor Tabs Disinfection tablets

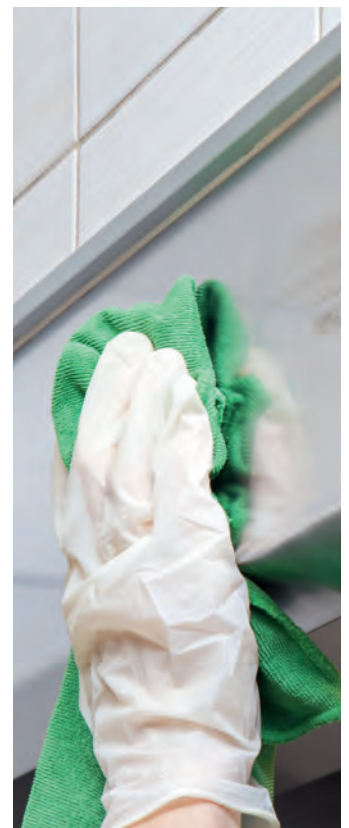


TUB

- QAC free, unperfumed disinfectant cleaner.
- Alcohol-based; quickly evaporates, leaving surfaces and equipment clean and disinfected.
- Kills bacteria and yeast.
- Passes **EN 1276** with a 30 second contact time.
- Ideal for use in the food processing or catering industry.

- A blend of detergent and chlorine releasing agents.
- Ideal for destaining and removing tannin from crockery.
- Provides in excess of 10,000 ppm available chlorine.
- Use for a variety of applications.
- Can be used neat or dissolved in water.

- Quick dissolving effervescent tablet providing a disinfection solution to kill bacteria, fungi, viruses and spores.
- Each tablet provides 1,000 ppm available chlorine in 1 litre of water.
- Suitable for a wide range of applications in kitchens and food preparation areas.



DISHWASHING

AUTOMATIC MACHINES



Dishwash

For automatic machines



- A choice of low-foam detergents for industrial dishwashing machines.
- Cuts through heavy grease and dried on food. Leaving crockery and utensils completely clean and bright.
- Formulated to prevent limescale formation and re-deposition of soil.

Dishwash - General soiling use in all water conditions.

Dishwash Extra - Effective in hard water.

Dishwash Multi - For soft to medium water.

Other dishwash products are available please see our **General Product Guide**.

Dishwash Chlor

For automatic machines



- Low-foaming, chlorinated detergent.
- Removes general soil, protein and tannin.
- Ensures crockery, glassware and cutlery is thoroughly clean.
- Suitable in soft water areas, or in conjunction with water softening equipment.

Alu Safe Tray Wash

Tray, crate and ware wash



- Highly efficient, low-foaming detergent.
- Ideal on plastic trays and crates, glazed pots, polycarbonate, aluminium and other caustic sensitive surfaces.
- Removes burnt on food debris, grease and carbon deposits.
- Use through a dishwashing machine or by manual washing.

DISHWASHING

AUTOMATIC MACHINES



Rinse Aid

For automatic machines



- Formulated rinse aids using a blend of low-foaming surfactants to promote rapid drying.
- Eliminates water spotting, sparkling, streak-free results.
- Helps prevent the formation of scale.
- Effective in all water conditions.

Rinse aid - Use in all water conditions.

Rinse Aid Extra - Effective in hard water, ideal for use in conjunction with **Combi Oven Cleaner**.

Rinse Aid Multi - All water conditions.

For full product descriptions, please see our **General Product Guide**.

Descale

Auto machines and equipment



- Highly effective, concentrated acid-based formulation.
- Quickly removes limescale and heavy soiling.
- Safe to use on stainless steel.
- Also suitable for removing scale from a variety of kitchen equipment.
- Effective in all water conditions.

Glaze All in One

100 dishwasher capsules



- Individual, water-soluble capsule with a dissolvable wrapper.
- Phosphate-free formulation.
- Contains an active stain remover and enzymes to cut through grease.
- Built-in salt action leaves dishes spotless and machine clean.
- Helps to overcome the build-up of limescale in machines.
- Efficient cleaning even on a short wash.

Kettle Descaler

Descaling tea/coffee equipment



- Concentrated, acid-based formulation.
- Removes heavy limescale build-up and general soiling.
- Suitable for descaling kettles, tea/coffee urns, coffee machines, bain maries and boilers.
- Safe to use on stainless steel.
- Low-dosage, very economical in use.

DISHWASHING

MANUAL WASHING



Q'det™

Unperfumed liquid detergent



- Unperfumed, washing up liquid for the manual cleaning of crockery, glassware and kitchen utensils.
- Produces a rich foam, even under heavily soiled conditions.
- Excellent grease removal properties.
- Concentrated formulation for greater economy.

Q'sol™

Superior washing up liquid



- Superior and long-lasting washing up liquid with a rich foam.
- Quickly and easily removes grease and dried on food from crockery and utensils.
- Effective in all water conditions.
- Clean, fresh fragrance.
- High dilution rate for better economy.
- Also suitable for the general cleaning of floors and walls.

Kind™

General washing up liquid



- Produces an excellent long-lasting foam.
- For manual cleaning of crockery, glassware and kitchen utensils
- Very good grease removal and drainage properties.
- Light lemon fragrance.
- Effective in all water conditions.
- Also suitable for the general cleaning of floors and walls.

Destain

Coffee stain and tannin remover



- Highly effective powder containing a chlorine releasing agent.
- Quickly removes stains.
- Dissolves easily in hot water.
- Use on crockery, tea urns, coffee making machines and vending machines.
- Unperfumed.
- Effective in soft, medium or hard water areas.

OVEN CLEANING



Oven Cleaner

Thickened heavy-duty cleaner



- Powerful and effective, thickened, foaming, heavy-duty oven cleaner.
- For cleaning the interior of enamelled ovens and surfaces, griddles and cast iron hobs.
- Removes stubborn baked-on grease and carbon - Ideal for deep cleaning ovens.
- Foam clings to vertical surfaces, longer contact time for better cleaning.
- Low odour .
- Extending trigger supplied in each box.

Combi Oven Cleaner

Concentrated detergent



- High-active, low-foaming detergent, developed for effectively cleaning the interior of combination ovens.
- Easily removes baked-on grease and food deposits.
- Designed for automatic dosing during a selected cleaning programme.
- Effective in all water conditions.
- Use in conjunction with **Rinse Aid Extra**.
- Also suitable for manual cleaning.

Grill Cleaner

High temperature grill cleaner



- Powerful, fragrance-free cleaner for griddles and hot plates.
- Designed to be used at high temperatures.
- Quickly removed baked-on carbon and grease without the need to cool.
- Strips grease build-up in just 60 seconds.
- No need to cool or rinse grill; helping to eliminate downtime.



DRAIN MAINTENANCE



HAND CARE



Drain Clear

Bio drain and grease trap



5 L

10 L

Sink & Drain Clear

Emulsifies grease and fat



5 L

- Biological liquid, digests fat and grease.
- Controls odours, helps prevent blockages.
- Contains naturally occurring micro-organisms to help keep drains clear and free-flowing.
- Safe to handle, eliminates the need to handle hazardous chemicals.
- Allows grease traps to work more efficiently, reducing the frequency of emptying by up to 70%.

- Powerful, high-active liquid.
- Clears grease, fat and food deposits in drains, gulleys and waste outlet pipes.
- Works quickly and efficiently.
- Helps to avoid expensive call out charges.
- Maintains drains to reduce build-up and blockages and keep them free-flowing.
- Unperfumed, suitable where food is handled.
- Helps to overcome and control odours.



Trigon® Range

Hand washing



500 ml

1 L

- Mild and gentle to the skin.
- Passes **EN 1276**, **EN 13727** and **EN 1499**.
- Helps to prevent the risk of cross contamination.
- Added moisturiser, suitable for frequent hand washing.
- **Trigon Plus** - Liquid hand wash
- **Trigon Foam Plus** - Foaming hand wash
- Suitable for use through the appropriate Evolve soap dispenser.

DOSING



SUPPORT MATERIAL

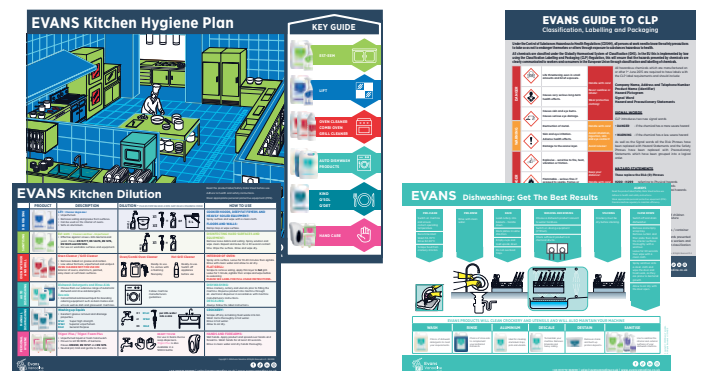


Dosing Systems and Dispensers

For the full range refer to our General Product Guide



Literature



Evans Vanodine has a variety of dosing equipment, dispensing systems, training support, wallcharts and other helpful literature available on request.

Literature is also available to download via our website www.evansvanodine.co.uk/leaflets.

The products in this brochure are recommended for use in the professional food and catering industry, to meet the current Food Hygiene Regulations.

Directions for use can be found on both the product label and the product specification sheet, which is available to view or download via our website www.evansvanodine.co.uk.



Evans
Vanodine
EST. 1919



EVANS VANODINE INTERNATIONAL PLC

Brierley Road, Walton Summit, Preston, PR5 8AH. England

tel: +44 (0) 1772 322200
web: www.evansvanodine.co.uk
email: sales@evansvanodine.co.uk
export@evansvanodine.co.uk

