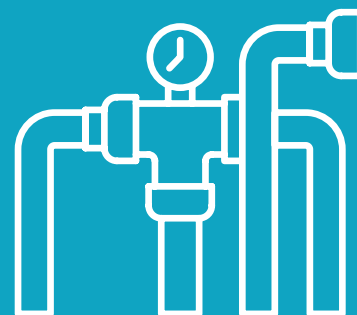


Evans Hypochlorite

Chlorine-based disinfectant



A chlorine-based, fast-acting disinfectant with bactericidal action for routine disinfection of milking parlours.

The non-foaming formulation mixes easily and rinses freely away.

Economical in use. The 25 L container makes up to 10,000 litres of working solution.

- Routine disinfection of milking plants, pipelines, dairy utensils and general cleaned surfaces.
- Suitable for in-place disinfection programmes.
- Recommended for use Q'sol detergent to give sanitising properties.
- Suitable for swimming pool chlorination.

DAIRY PLANT AND EQUIPMENT

MANUAL DISINFECTION OF PRE-CLEANED DAIRY EQUIPMENT:

Add 100 ml Evans Hypochlorite to 40 litres of water. Immerse equipment, making sure that all surfaces are in contact with the solution for at least two minutes. Rinse off with clean, cold water.

IN-PLACE DISINFECTION OF PRE-CLEANED DAIRY EQUIPMENT:

Add 100 ml Evans Hypochlorite to 40 litres of water. Circulate the solution through the plant for at least two minutes. Rinse off with clean, cold water and allow to drain completely.

MANUAL COMBINED SANITISING IN DAIRIES:

Add 100 ml Evans Hypochlorite to 40 litres of warm detergent solution (45°C/113°F).

Thoroughly pre-rinse off all of the equipment in clean water. Scrub with solution for at least 2 minutes, making sure all surfaces make contact with the solution. Rinse off with clean, cold water and allow to drain completely.

IN-PLACE COMBINED SANITISING IN DAIRIES:

Add 100 ml Evans Hypochlorite to 40 litres of hot detergent solution (77-82°C/170-180°F). Thoroughly pre-rinse the plant in clean water and run to waste. Circulate solution for 5-10 minutes and then run to waste. Rinse off with clean, cold water and allow to drain completely.

GENERAL DISINFECTION

Add 25 ml Evans Hypochlorite to 10 litres of water.

Wipe or scrub surface with solution. Rinse off with clean, cold water.

SWIMMING POOL CHLORINATION

Pool water should be chlorinated to maintain a concentration of between 0.5 and 1.0 ppm of available chlorine.

Add Evans Hypochlorite to the pool water at a rate of 60 ml per 5,000 litres of pool water. Then a daily top up charge of 20-40 ml per 5,000 litres should be added, depending on bather load and weather.

25 L

Order Code: R064KEV

Pack: 25 litres

200 L

Order Code: R064NEV

Pack: 200 litres

PRODUCT INFORMATION:

Appearance:	Pale yellow to colourless clear liquid
Odour:	Hypochlorite
pH - undiluted:	12.4
Shelf life:	1 year

QUALITY AND ENVIRONMENTAL ASSURANCE:

This product is manufactured in the U.K. by EVANS VANODINE INTERNATIONAL PLC under an ISO 9001 Quality Management System Cert. No. FM 09535 and an ISO 14001 Environmental Management System Cert. No. EMS 506072 registered by the British Standards Institution.

REVISION DATE: 21/12/22



Scan here to view safety data information

